

PRODUCT INFORMATION PACKET

Model No: 5KC49TN0034

Catalog No: C275

1 HP General Purpose Motor, 1 phase, 1800 RPM, 115/230 V, 56 Frame, TEFC
Single Phase TEFC Motors



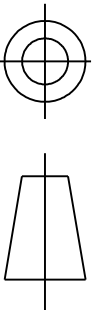
Nameplate Specifications

Output HP	1 Hp	Output KW	0.75 kW
Frequency	60 Hz	Voltage	115/230 V
Current	13.2,6.6 A	Speed	1725 rpm
Service Factor	1.15	Phase	1
Efficiency	72.2 %	Power Factor	0
Duty	Continuous	Insulation Class	B
KVA Code	K	Frame	56
Enclosure	Totally Enclosed Fan Cooled	Thermal Protection	N/R
Ambient Temperature	40 °C	Drive End Bearing Size	6203
Opp Drive End Bearing Size	6203	UL	Recognized
CSA	Yes	CE	N
IP Code	43		

Technical Specifications

Electrical Type	Capacitor Start Induction Run	Starting Method	SM
Poles	4	Rotation	Counterclockwise/Clockwise
Mounting	Rigid Base	Motor Orientation	ANY
Drive End Bearing	BALL	Opp Drive End Bearing	Ball
Frame Material	Rolled Steel	Overall Length	12.96 in
Frame Length	7.68 in	Shaft Diameter	0.630 in
Shaft Extension	1.88 in		
Connection Drawing	52A105381BA	Outline Drawing	52A107631P4

This is an uncontrolled document once printed or downloaded and is subject to change without notice. Date Created:03/11/2020

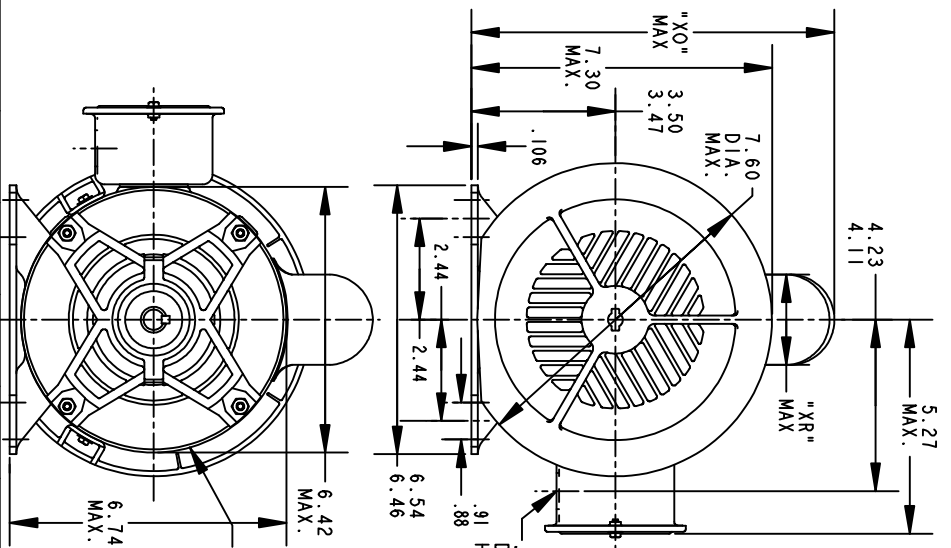


THIRD ANGLE PROJECTION

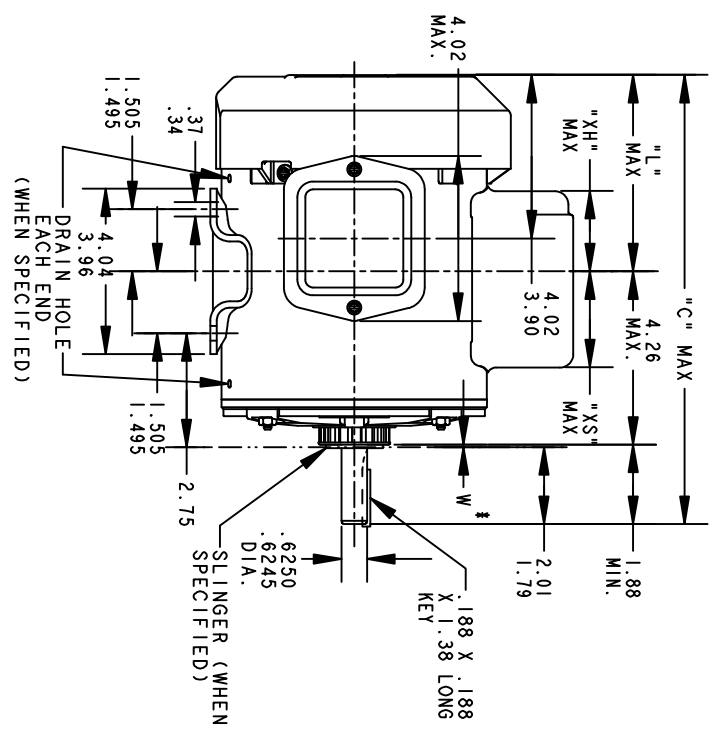
REVISIONS

REV.	DESCRIPTION	DATE	APPROVED
16	AADED PT# 9 PER DSI0-0516	05/07/10	PRAVEEN.K

REV 15 SHEET 1
 52A107631
 DRAWING NO. A



VIEW OF P. E. END SHIELD



ALL DIMENSIONS ARE IN INCHES

*W IS A VARIABLE CLEARANCE DUE TO VARIATIONS IN PARTS AND ASSEMBLY

P	TYPE	GE SIZE	NEMA FR.	"C"	"L"	"XH"	"XO"	"XR"	"XS"	MIN. SHELL
9	KC	49	56	12.96	6.81	3.58	8.24	1.60	2.17	7.68
8	KC	48	56	13.71	6.05	4.33	8.26	2.40	2.92	8.43
7	KC	49	56	11.43	5.28	2.00	8.26	1.60	2.48	6.15
6	KC	49	56	12.43	6.28	3.51	8.22	1.60	2.24	7.15
5	KC	49	56	12.43	6.28	3.51	8.94	2.40	2.24	7.15
4	KC	49	56	12.96	6.81	3.58	8.94	2.40	2.17	7.68
3	KC	46	56	11.83	5.68	2.91	8.94	2.40	2.84	6.55
2	KC	46	56	11.83	5.68	2.91	8.84	2.22	1.63	6.55
1	KC	42	56	11.00	4.85	2.08	8.84	2.22	2.46	5.72

SIGNATURES

MODEL	M.D. PAPE	DATE	10/23/90
DETAIL			
CHECKED			
ENGRG			
MFG			

REGAL-BELOIT CORPORATION

REGAL

TITLE

OUTLINE

GENERAL PURPOSE MOTOR TEFC - BALL BEARING - WELDED BASE FWF - 40 FRAME REDESIGN

FOR ADDITIONAL INFO REFER TO:

APPLIED PRACTICES	QUALITY	ISSUED	M.D. PAPE	04/27/94
DIMENSIONS ARE IN INCHES	ISSUED	M.D. PAPE		

MATERIAL

SOLID MODEL: 52A107631

SCALE: 0.250

REF. No.:

SIZE DRAWING

A

52A107631

REV 15

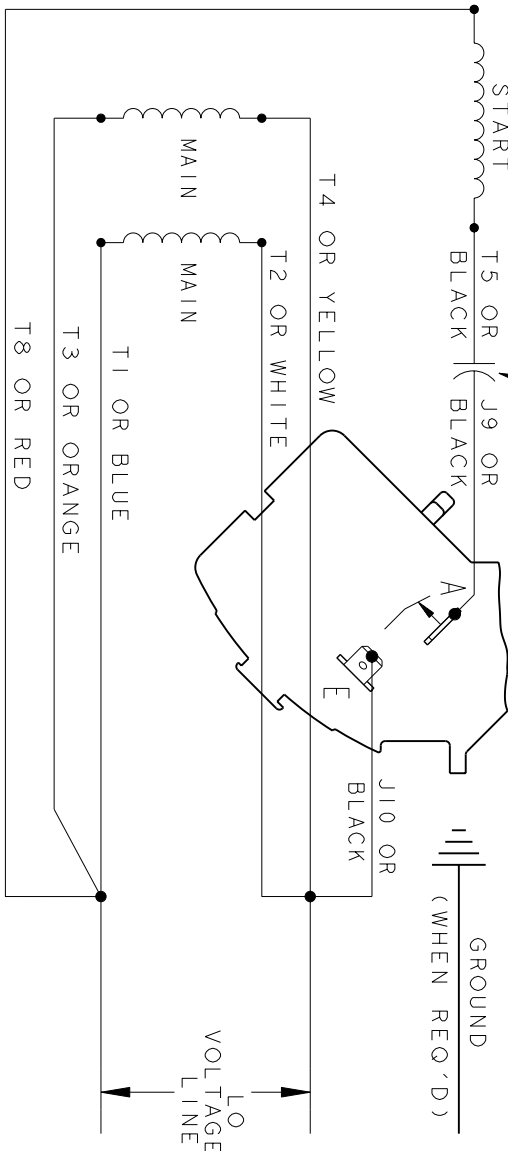
SHEET 1 OF 1



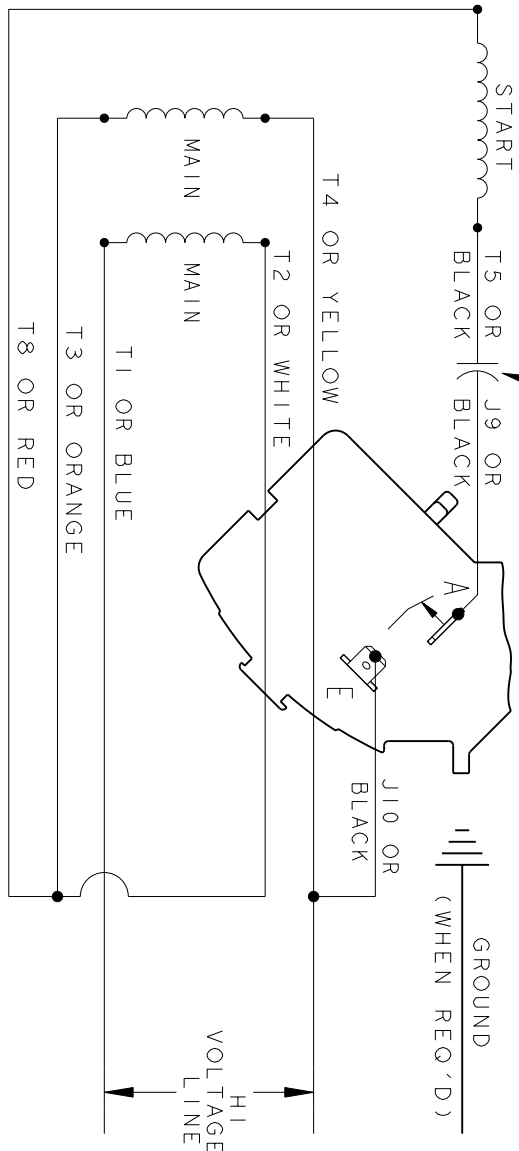
REV.	DESCRIPTION	DATE	APPROVED
3	UPDATED FORMAT	01/04/06	MAM

CCW/CW ROTATION - DUAL VOLTAGE
TYPE KC OR KH

CAPACITOR AS SHOWN FOR KC MOTORS ONLY. LEAD T5 BLACK CONNECTED DIRECTLY TO TERMINAL BOARD FOR KH MOTORS.



CAPACITOR AS SHOWN FOR KC MOTORS ONLY. LEAD T5 BLACK CONNECTED DIRECTLY TO TERMINAL BOARD FOR KH MOTORS.



NOTE#1 - TO REVERSE ROTATION, INTERCHANGE T8 RED AND J10 BLACK LEADS.
NOTE#2 - WHEN MORE THAN ONE CAPACITOR IS USED, CONNECT IN PARALLEL.

SWITCH (H) - 115D958AA

REF. DIAG. - 113A326
CONNECTION LABEL - 52X332917



REGAL-BELOIT CORPORATION
CONNECTION DIAGRAM

SIGNATURES	DATE
MODEL M.D. PAPER	06/29/87
DETAIL	.
CHECKED	.
ENGRG	.
MFG	.
QUALITY	.
ISSUED	M.D.P. 06/29/87
FOR ADDITIONAL INFO REFER TO:	
APPLIED PRACTICES	✓
DIMENSIONS ARE IN INCHES	
MATERIAL	SOLID MODEL: 52A105381BA

TITLE	FME: 30 FRAME SWITCH REDESIGN	REV	3
SIZE DRAWING	A	SCALE: 1.000	REF. No: .
REGAL-BELOIT CORPORATION		SHEET 1 of 1	

MARATHON ELECTRIC CORPORATION

TYPICAL PERFORMANCE CURVE for AC MOTOR

Customer

Curve at

230

Volts

HP 1

PHASE 1

Model No 5KC49TN0034

60

HZ

VOLTS 115/230

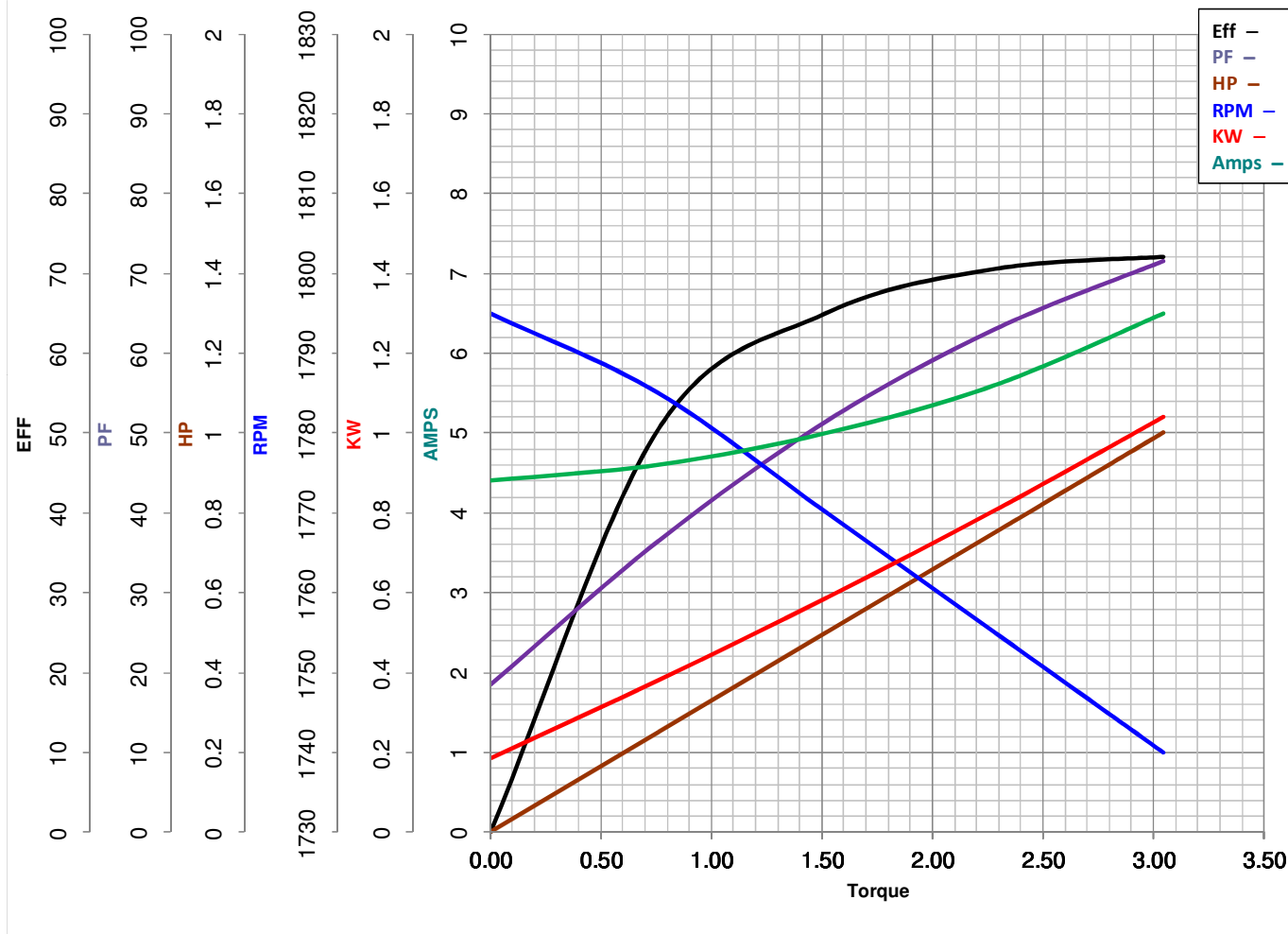
1

HP

Catalog No 0

HZ 60

RPM 1725



Torque in Lb.Ft

FL TORQUE 3.04 Lb.Ft

BD TORQUE 11.6 Lb.Ft

LR TORQUE 12.66 Lb.Ft

FL AMPS 13.2/6.6

PU TORQUE 11.4 Lb.Ft

LR AMPS 40.9

WINDING 52X330468P1

Prepared By

BHARGAVI

Date

2/27/2018